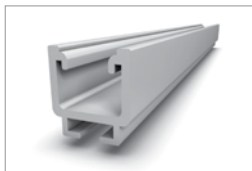
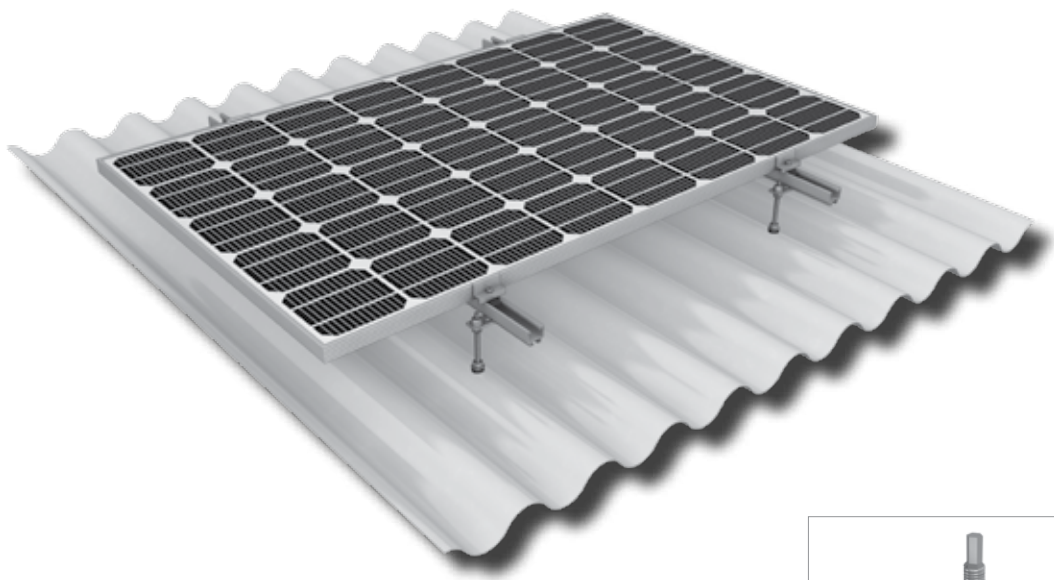


Mounting systems for solar technology



K2 SYSTEMS
SLOPED ROOF SYSTEMS
HANGER BOLT

HANGER BOLT SYSTEM

- For roofs with corrugated fibre cement roofing
- Pre-assembled with adapter plate for time-saving assembly
- Elongated hole enables easy connection by T-bolt to the K2 SolidRail range
- Screw head with hexagon drive allows for assembly with electric screwdriver
- Extra-long metric thread for height adjustment
- All components made of high-quality stainless steel and aluminium, sealing element made of high quality EPDM
- Greater span widths possible by mounting with K2 Bridge

Technical data

Field of application	Sloped roof
Roofing	Corrugated fibre cement with timber sub-structure
PV modules	Suitable for all standard module types
Module orientation	Vertical / horizontal (with cross bracing)
Material	Aluminium (EN AW-6063 T66)
Connecting elements	Stainless steel screws A2-70, sealing made from EPDM
Roof connection	Screw connection
Static principles	Determination of load capacity values by independent testing institutes, load assumption in accordance with DIN 1055 / Eurocode 1
System components	Hanger bolt, SolidRail range, mid and end clamp sets, K2 Bridge



Elpo | St Vigil Enneberg - Italy
System: 5,29 kW | Hanger Bolt System



Elpo | Frubona Terlan - Italy
System: 671,86 kW | Hanger Bolt System